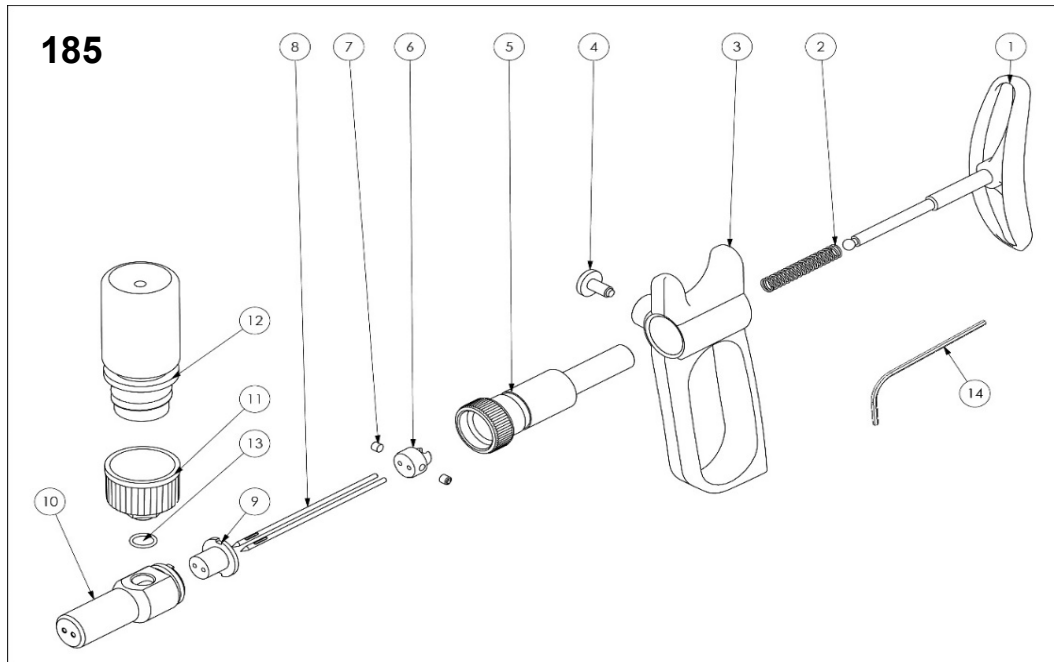


**Exploded drawing**



Draw ref.	Cat. No.	Description	Comment
<b>Group 9410</b>		<b>Spare-parts for chicken pox syringe <i>fullpox</i> 185</b>	
# 01	185.970	Pusher rod	
# 02	185.751	Spring	stainless steel
# 03	187.560	Handle	blue colour
# 04	187.701	Handle screw	brass
# 05	185.521	Socket	stainless steel
# 06	185.513	Needle holder	stainless steel
# 07	185.901	Needle screws (2 pces)	stainless steel
# 08	185.902	Needles (2 pces)	stainless steel
	185.910	Needles (10 pces)	stainless steel
# 09	185.721	Barrel cap	POM
# 10	185.501	Barrel	stainless steel
# 11	185.788	Bottle holder	PP / stainless steel
# 12	185.987	Bottle with original cap	PP
# 13	501.951	Bottle holder O-ring (10 pces)	FKM
# 14	841.704	Allen key 1.5 mm	stainless steel