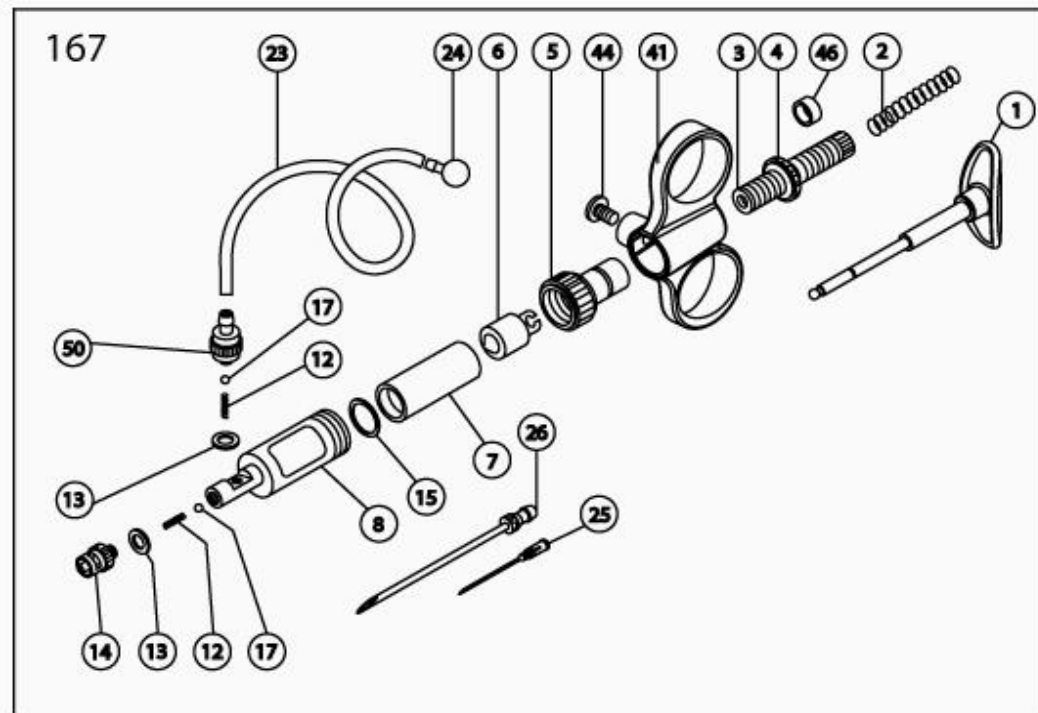


Spare-parts for self-refilling syringes 167

Exploded drawing



Draw ref.	Cat. No.	Description	Comment	Nominal size
Spare parts for self-refilling syringe 167 with two ring fingergrip				
# 01	167.970	Plunger rod		0.3 / 0.5 mL
	167.971			1 mL
	167.978			2 mL
	167.973			5 mL
# 02	187.751	Spring, rod		0.3 to 1 mL
	832.751			2 mL
	832.752			5 mL
# 03	187.961	Socket (incl. part 46)		0.3 to 1 mL
	187.962			2 mL
	187.963			5 mL
# 04	187.551	Front nut		0.3 to 1 mL
	187.552			2 mL
	187.553			5 mL
# 05	187.520	Cap		0.3 / 0.5 mL
	187.521			1 mL
	187.522			2 mL
	187.523			5 mL
# 06	187.584	Plunger, piston	Stainless steel	0.3 mL
	187.585			0.5 mL
	187.586			1 mL
	187.587			2 mL
	187.588			5 mL
# 07	0187.003	Barrel (6 pces)	Glass	0.3 mL
	0187.005			0.5 mL
	0187.01			1 mL
	0187.02			2 mL
	0187.05			5 mL

# 08	187.502	Casing	Chrome plated brass	0.3 / 0.5 mL
	187.503			1 mL
	187.505			2 mL
	187.507			5 mL
# 12	187.980	Spring valve (10 pces)	<i>Available as a set</i>	0.3 mL
	187.981			0.5 to 5 mL
# 13	187.921	Washer (10 pces)	<i>Available as a set</i>	PTFE
# 14	705.010	Outlet nozzle valve, Luer Lock	Chrome plated brass	
	707.010	Outlet nozzle valve, Record Unifix		
	714.910	Outlet nozzle valve, Luer Linden with locking nut		
	720.010	Outlet nozzle valve, Rotlauf		
	186.562	Outlet nozzle valve for Needle Guard (Sterimatic®), Luer Lock		
# 15	187.928	Washer (10 pces)	<i>Available as a set</i>	FPM
	187.924			0.3 / 0.5 mL
	187.925			1 mL
	187.926			2 mL
# 17	187.991	Valve ball (10 pces)	<i>Available as a set</i>	5 mL
# 23	187.705	Feed tubing	1 meter / pk	
	187.910		10 meter / pk	
	187.710		by the meter	
# 24	187.596	Sinker	Chrome plated brass	
# 25	187.933	Vent cannula (10 pces)	Plastic	
# 26	187.592	Feed needle	Chrome plated brass	
# 41	167.562	Two ring handle blue		
# 44	187.701	Screw		
# 46	187.711	Sleeve	PTFE	0.3 to 1 mL
	187.712			2 mL
	187.713			5 mL
# 50	187.959	Intake valve	Chrome plated brass	0.3 to 1 mL
	187.960			2 / 5 mL